

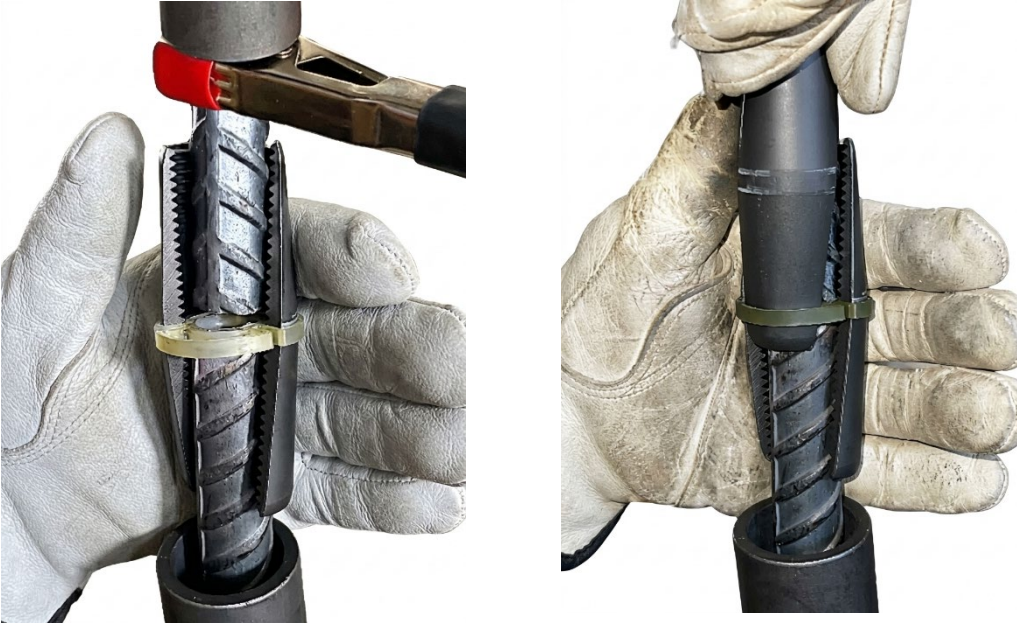


# INSTALLATION TEMPLATE

 <p>Cutter      Cutter      Cutter</p> <p>Taper Sleeve      Taper Sleeve      Spacer</p>	<p><b>1. Components of a Coupler Set:</b></p> <ul style="list-style-type: none"><li>- 3 x Cutter</li><li>- 2 x Taper Sleeve</li><li>- 1 x Spacer (Optional Part)</li></ul>
	<p><b>2. Place Sleeves</b></p> <ul style="list-style-type: none"><li>- Place both <b>Taper Sleeves</b> on one rebar</li><li>- <b>Ensure correct direction of the Taper Sleeves</b></li><li>- Draw witness marks on rebar is recommended (Marking tool is available in Reogrip accessories)</li></ul>
	<p><b>3. Place Cutters</b></p> <ul style="list-style-type: none"><li>- Slide 1 <b>Taper Sleeve</b> above the joint</li><li>- Insert 2 <b>Cutters</b> on the <b>Spacer</b> before fitting on rebar</li><li>- Insert the 3rd <b>Cutter</b></li></ul>

## INSTALLATION TEMPLATE

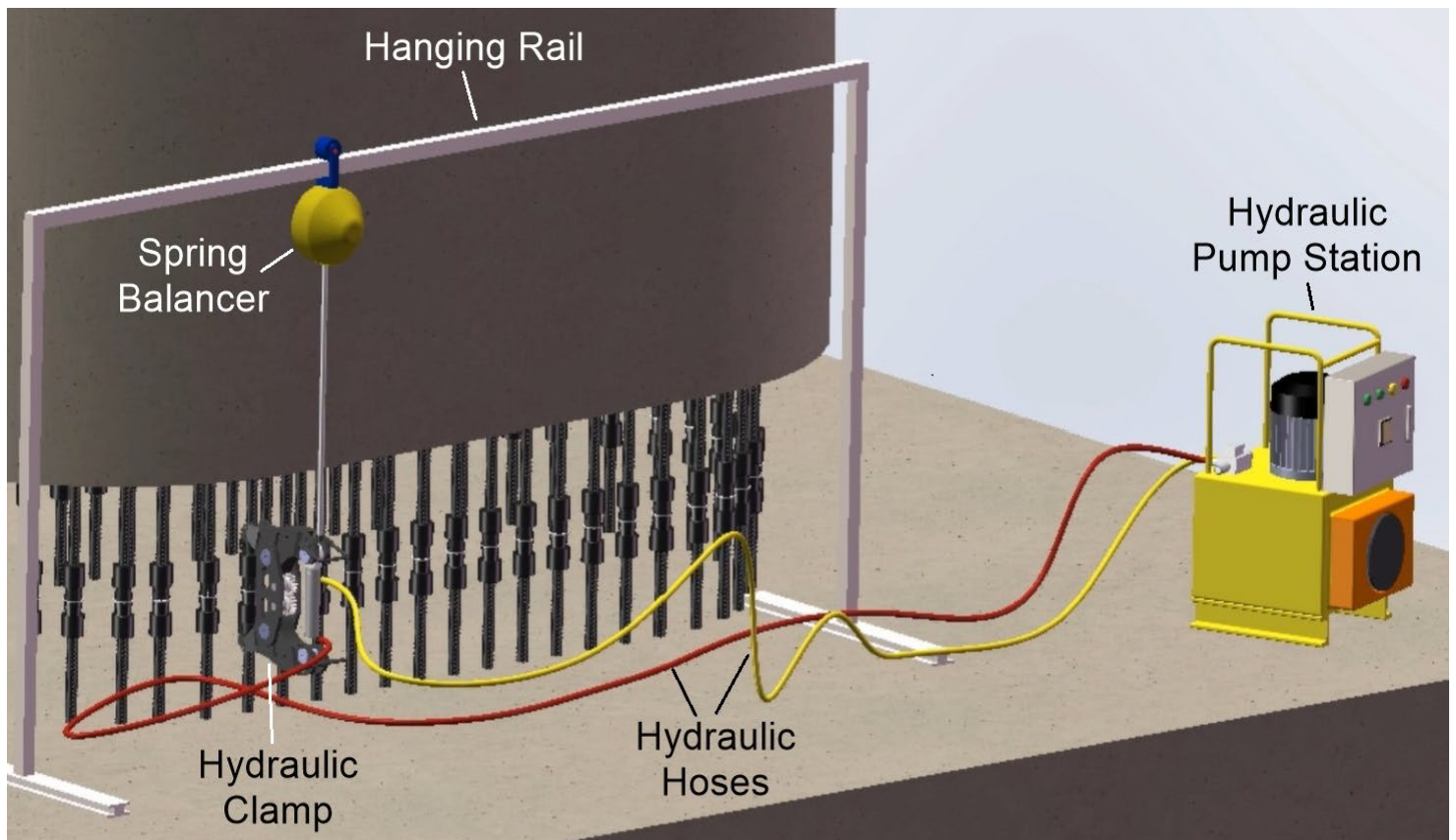


### 4. Pre-assembly

- Squeeze **Taper Sleeves** in by hands for holding position, hammer is recommended for enhancing the holding

- Ensure all **Cutters** **MUST** be aligned at the same level before the clamping

- When the gap between rebar is too small to fit the **Spacer**, leave the **Spacer** out.



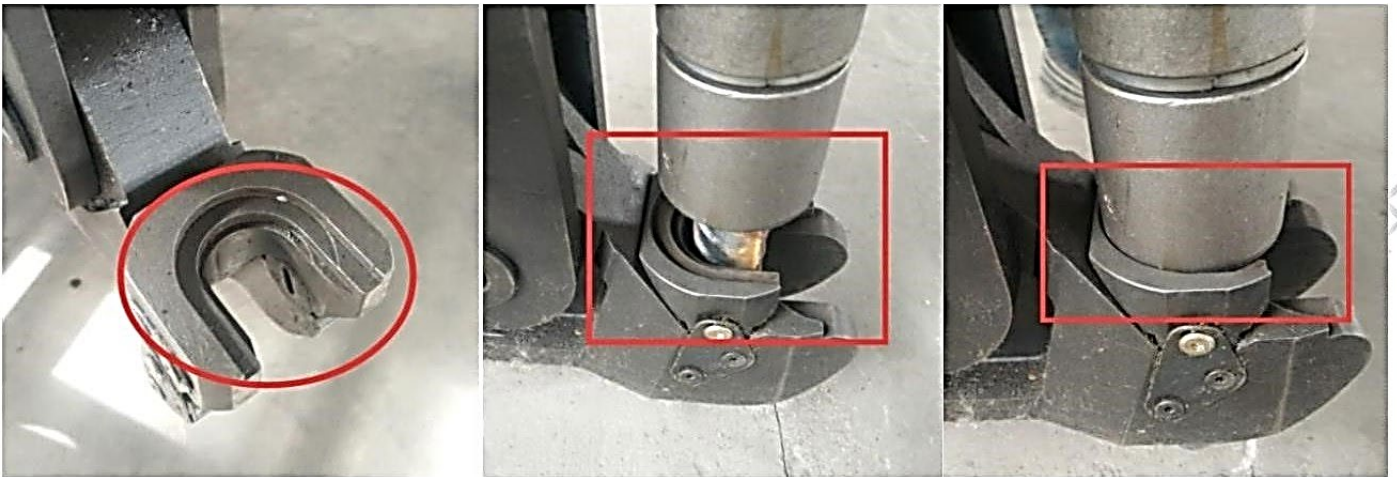
### 5. Setup equipment including, but not limited:

- **Hanging Rail**
- **Spring Balancer**
- **Hydraulic Clamp**
- **Hydraulic Pump Station**
- **Connecting Hydraulic Hoses** (hydraulic hoses length is up to 30 meter)

## INSTALLATION TEMPLATE



6. Apply the **Hydraulic Clamp** to engage coupler



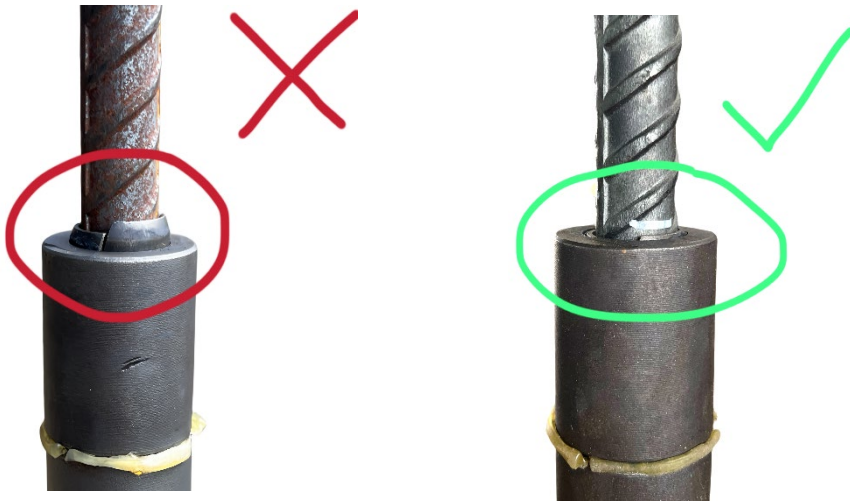
7. - Ensure coupler is fully nested into the clamp jaws



8-1. **Quality Assurance – Witness Mark**

When clamping is completed, the witness marks should be seen

# INSTALLATION TEMPLATE



## 8-2. Quality Assurance – Cutters Alignment

As shown in left picture, If misalignment of **Cutters** is more than 1.5mm +/- that is unsuccessful clamp, it is caused in step 4 where all cutters were NOT aligned.



## 8-3. Quality Assurance - Calliper

Additionally, use calliper to measure compressed length.  
(special calliper can be purchased in Reogrip accessories)

数据记录 Data Logging					日期 Date
					时间 Time
序号 Number	时间 Time	上升压力 Upward pressure	下降压力 Downward pressure	温度 Temperature	

上翻页  
Turn the page

上一行  
Previous line

下一行  
Next line

下翻页  
Turn the page down

清空记录  
Clear the record

刷新  
Flushed

导出U盘  
Export a USB flash drive

返回  
Return

## 8-4. Quality Assurance – Record of Clamping Pressure

Reogrip pump station records pressure of each clamping, data is exportable into spreadsheet.